

Community

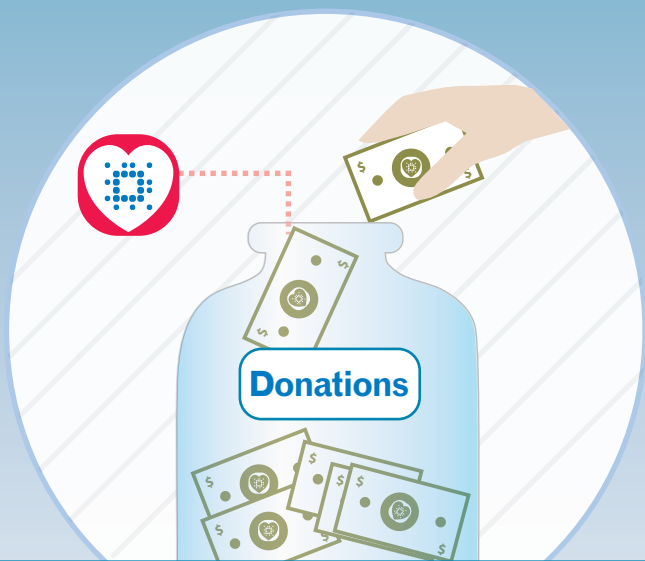
EXPERIAN'S MATCHING PROGRAMS

2 Ways to Give

Thank you for your passion to help your community by volunteering and making donations! Together, we can make a real difference in our communities and help make the world a better place.

The Corporate Social Responsibility team supports employee volunteer efforts and large-scale opportunities for group volunteerism at work. The team manages Experian's matching programs for monetary and volunteer-time donations. Experian is excited about partnering with you to support the great work you're doing.

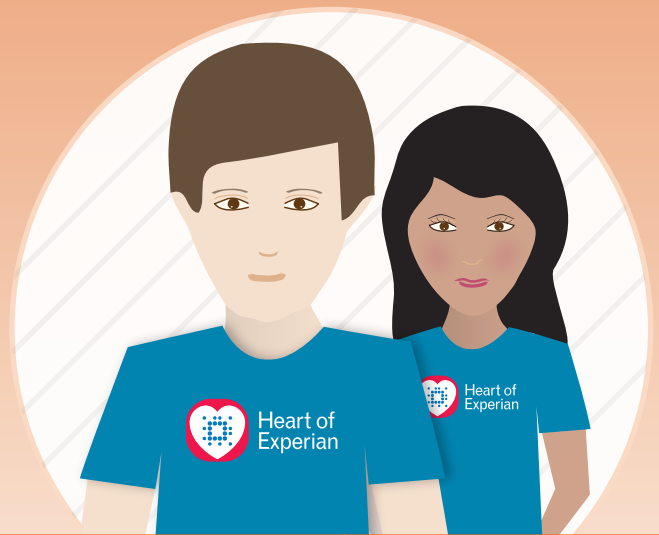
DOLLAR FOR DOLLAR



Minimum donation match **\$50**

Maximum per employee per fiscal year **\$500**

CHANGE FOR CHANGE



Individual volunteer

2 hours or more = **\$100** per instance

Maximum **\$300** per employee

Group volunteers

per person in group = **\$100**

Maximum **\$1,000** per instance
Maximum **\$3,000** per fiscal year

The Corporate Social Responsibility team will make a donation to a qualifying non-profit organization to match a donation made by an employee. To participate, complete the [Application for the D4D program](#) and upload your donation receipt.



The Corporate Social Responsibility team will make a donation to a non-profit organization in support of a particular event/volunteer activity in which an employee participates. Qualified activities are those designed to raise money, in-kind donations or volunteer support for a non-profit organization. To participate, complete the [Application for the C4C program](#).



Remember to log your hours at experian.com/volunteerimpact

LOG IN NOW

Program guidelines

- The services provided by the organization must not be religious or political (unless they are providing services for the general community) in nature.
- The organization must be non-profit, qualified with 501c3 status and comply with the Patriot Act.
- All applications must be submitted within four weeks of the donation, fundraising event or volunteer activity.
- Applications are accepted throughout the year until the budget has been used for this program.
- Employees will be notified when an application is received and processed. Typically, applications take two months to process after they are received.
- Ineligible organizations include: All athletic teams, booster clubs and PTOs; bequests and memorials; school choirs, bands, drill teams; fraternal and political organizations; any organization that has a discriminatory policy; professional associations; ministries, theological or bible schools; fraternities, sororities and alumni associations; any organization that does not comply with the Patriot Act; and organizations with the tax status of §509(a)(3).



Community