

## State Street Will Not Match

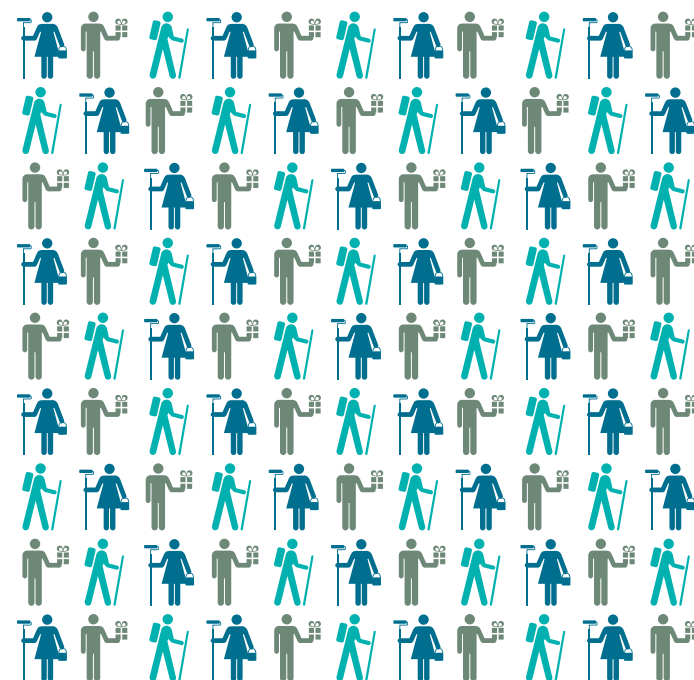
- Gifts to fulfill pledges, tithes or other church-related financial commitments
- Gifts to private foundations
- Gifts to organizations whose primary purpose is sectarian, religious or political
- Gifts to individuals or fraternal, political, military, veteran or labor organizations
- Gifts to clubs, professional associations, alumni associations or scholarship funds
- Gifts to organizations that may involve State Street in controversial public issues
- Registration fees associated with fund-raising events, subscription fees for publications or payments for tickets for benefit functions
- Any payments that are not direct gifts to a charitable institution, e.g., payments for auction merchandise
- Gifts of real or personal property
- Gifts to organizations from which the donor or the donor's family receives a direct personal benefit
- Cumulative gifts from several individuals reported as one contribution
- Volunteer service performed by the spouse or other family member
- Travel time to or from a volunteer activity does not count toward the number of volunteer service hours
- Anticipated volunteer service not yet performed
- Gifts made more than 12 months prior to the request for a match

## Policies and Procedures

- Matching ratio is 1:1.
- Minimum gift eligible is US\$25 or local currency equivalent. For installment gifts, one request for multiple installments over a 12-month period is allowed.
- Minimum volunteer hours: 16. A State Street grant will be awarded to the charitable organization after volunteer hours are completed and verified.
- If the donor applies for several contributions, gifts will be matched in the order received, up to the maximum annual donor limit for the calendar year.
- The donor limit is based on the date of the gift. Individual grant requests apply against the calendar year in which the gift was made.
- No double-counting. Requests for contributions are to be applied for under one component of State Street's Matching Gift Program only.
- Grants will be sent directly to the organization recommended by the employee and approved by State Street.
- Donations are matched on a quarterly basis. Processing time depends upon when during the quarter the matching gift request is received and the date the donor's gift or volunteer hours are verified by the recipient organization.
- Contributions must be verified by the educational and/or charitable organization in order to be deemed eligible for a match.
- The Matching Gift Program matches contributions made by eligible State Street employees and directors on a first-come, first-serve basis.
- State Street may suspend, amend or discontinue the Matching Gift Program, or any component thereof, at any time and reserves the right to determine in its sole discretion whether a grant application meets the eligibility criteria set forth herein, and its decision shall be final.
- The Matching Gift Program has an annual overall budget and State Street reserves the right to pro-rate or decline awards if or when the overall participant demand exceeds the annual program budget.



## STATE STREET MATCHING GIFT PROGRAM



Increase your donations to the charitable organizations and educational institutions of your choice through the State Street Matching Gift Program's three distinct methods of matching. Through GiveMore, State Street will match employees' financial gifts. CollectMore is a match of your fulfilled pledges for a fundraising event. Through DoMore, State Street will make a monetary grant to match your volunteer efforts with a nonprofit organization.

#### How to Request a Matching Gift

Employees access the Matching Gift Program through the Employee Involvement website: [www.easymatch.com/statestreet](http://www.easymatch.com/statestreet)

#### Eligible Participants

- Active employees of State Street Corporation (and its wholly owned subsidiaries)
- Current directors of State Street Corporation

Note: Spouses and surviving spouses of eligible employees, temporary employees, interns and contract workers are not eligible to participate.

#### Eligible Charitable or Educational Organizations

Eligible organizations successfully complete and/or submit required documentation, to help ensure that State Street's international philanthropy is conducted in an accountable and responsible manner.

## GIVE MORE

Through GiveMore, State Street will match one-for-one employees' financial gifts to eligible institutions based on the following annual limits:

Annual Gift Match Maximum	Participant Status
\$35,000*	Board of Directors, CEO, President, Vice Chair
\$25,000*	Executive VP
\$15,000*	Senior VP
\$5,000*	All other employees

\*or its equivalent in non-US currency

## DO MORE

Through DoMore, State Street will match employee volunteer efforts with a US\$250 grant to a charitable organization after an eligible participant volunteers at least 16 hours of his or her time to that organization. Eligible participants may apply for additional grants for the same or different organizations provided an additional 16 hours of work has been performed for each grant.

There is a US\$5,000 program cap for the DoMore component of State Street's Matching Gift Program and that \$5,000 cap counts toward an employee's overall Matching Gift Program annual limit.

## COLLECT MORE

Through CollectMore, State Street will match one-for-one fulfilled pledges raised by eligible participants to eligible charities. CollectMore activities are organized events, sponsored by charitable organizations, in which groups of individuals come together to participate in an activity (e.g., walking, running, biking or bowling) and raise pledges to further the mission and goals of the charity.

There is a US\$5,000 program cap for the CollectMore component of State Street's Matching Gift Program and that \$5,000 cap counts toward an employee's overall Matching Gift Program annual limit.

#### How Does CollectMore Work?

Only funds raised as the result of an eligible individual's participation in a charitable fundraising activity will be matched. For example, pledges raised by a team or through a group or family effort would not be considered personal effort and would not qualify for a matching donation.

State Street's policies and procedures also prohibit double funding. Requests for contributions are to be applied for under one component of State Street's Matching Gift Program only. For example, if an employee requests a matching gift through CollectMore, the employees who made those pledges cannot also submit a request for matching under GiveMore.



## STATE STREET

#### Contact Information

Jill T. Healy  
Program Manager  
[jthealy@statestreet.com](mailto:jthealy@statestreet.com)

[www.easymatch.com/statestreet](http://www.easymatch.com/statestreet)

15-23564-0115